

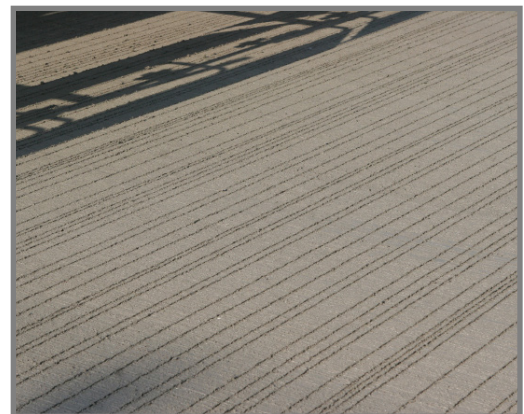
HEM PAVING

SIMPLY GREAT SOLUTIONS

12-28 Texture Cure



Individual Solutions for all Your Paving Needs



www.hempaving.com • info@hempaving.com
319-824-3011

HEAVY EQUIPMENT MFG • 601 E FIRST ST • GRUNDY CENTER, IA 50638



Optional Burlap Drag Assembly



Optional Cure Tote Rack



Optional Poly Roll Attachment

Optional Equipment (not included in base machine)

Transport Axle

- hydraulic controls
- removable transport hitch

Poly Roll Attachment

- hydraulically controlled
- sectional design for various coverage widths
- poly roll material not included

Additional Machine Width

- includes all frame sections, walk platforms, and hose extensions
- 4 ft. (1.2 m) extensions

Burlap Drag Assembly

- hydraulic controls
- adjustable width arms for complete slab width coverage

Water System for Burlap Drag

- electric water pump
- all required hoses and wiring
- spray pipe with fogging nozzle tips
- sediment strainer

Additional Tining Apparatus

- standard T/C machine includes transverse or longitudinal tining, the second tining system can be ordered separately
- includes hydraulic plumbing
- hydraulic crown
- automatic controls

Cure Tote Rack

- framework for allowing the use of 250 gallon (950 liter) plastic cure container
- includes additional cure section and return hoses

Skewable Tining Adaptors

- mounting apparatus for placing transverse tining rack at skewed angle

Form Riding Wheels (in lieu of tracks)

Critical Spare Parts Package

Tining Brooms

2 year filter package

Other Engines Available at Customer Request



HEM PAVING

SIMPLY GREAT SOLUTIONS

Standard Specifications for HEM 12-28 Texture Cure

Turbo Charged Diesel Engine -

- 112 hp (82.3 kW) Tier III
- enclosed engine compartment
- engine soundproofing standard

Hydraulic Oil Reservoir 55 gallon (208 liter)

Fuel Reservoir 46 gallon (174 liter)

1 Hydraulic System Heat Exchanger

- with electric motor

Hydraulic Pump System

- (1) 4 section hydraulic pump

12 ft. - 28 ft. (3.65 m - 8.5 m) Slab Width

- 3 ft. (91 cm) right and
3 ft. (91 cm) left telescoping frame
- tubular steel frame
- frame extensions included in standard
width package:
(2) 4 ft. (121 cm), (1) 2 ft. (61cm)
- main- frame jacks to assist with width change

2 Track (continuous rubber) Drive

- (2) 8 ft. (2.43 m) long x 11.8 inches (30 cm)
wide tracks
- hydrostatic drive
- 140 ft. / 42.6 m per minute travel

Hydraulic Grade Control

- 4 hydraulic stringline sensors provide automated
grade control
- 4 hydraulically controlled grade towers
- manual and automatic control of grade towers
from operator's platform

Steering System

- 2 hydraulic stringline sensors
- steer from right, left or rear side of machine
- automatic and manual steering, controlled from
operator's platform
- forward and reverse steering

Curing System

- hydraulically controlled mechanical agitation,
variable speed
- triple filtration system for cure material
- excess flow return liquid agitation
- adjustable pressure regulator
- hydraulically powered cure pump w/pressure
gauge, variable speed
- 175 gallon (662 liter) cure tank
- 3 way stainless steel quick disconnect 'fan' type
nozzles with 'no-drip' bodies
- polyurethane wind guard

Power Rinse System

- (1) 55 gallon (208 liter) rinse tank
- controlled from operator's platform

Wire Tine Texturing Assembly -

Transverse OR Longitudinal - Customer Choice

- TRANSVERSE : carriage for 10 ft. (3.05m) texturing
broom (broom not part of standard equipment)
- LONGITUDINAL : broom rack full width of machine
(broom not part of standard equipment)
- automatic or manual control of texturing
mechanism variable speed
- hydraulic adjustable crown
- automatic shut-off of broom at end of cycle
(transverse)

Operator's Platform

- hydraulic system pressure gauges: travel,
spray, tining
- hydraulic controls: travel, agitation, tining, drag
- high visibility "wrap around" console
- engine controls and monitoring devices mounted
on console
- safety railing
- engineered for easy monitoring and excellent view
of all machine functions
- operator seat

Material and specifications subject to change without notification

www.hempaving.com • info@hempaving.com
319-824-3011

